

Diverse & Circular Economy

Creating a robust and diversified economy that reimagines waste and resource use while investing in our human capital.

What does *Diverse & Circular Economy* include?

- Systems for reducing and managing waste that create value instead of costs
- Diversified economic development that creates a resilient local economy
- Preparation of workforce and students for green jobs and new industries



Circular Economy *noun*

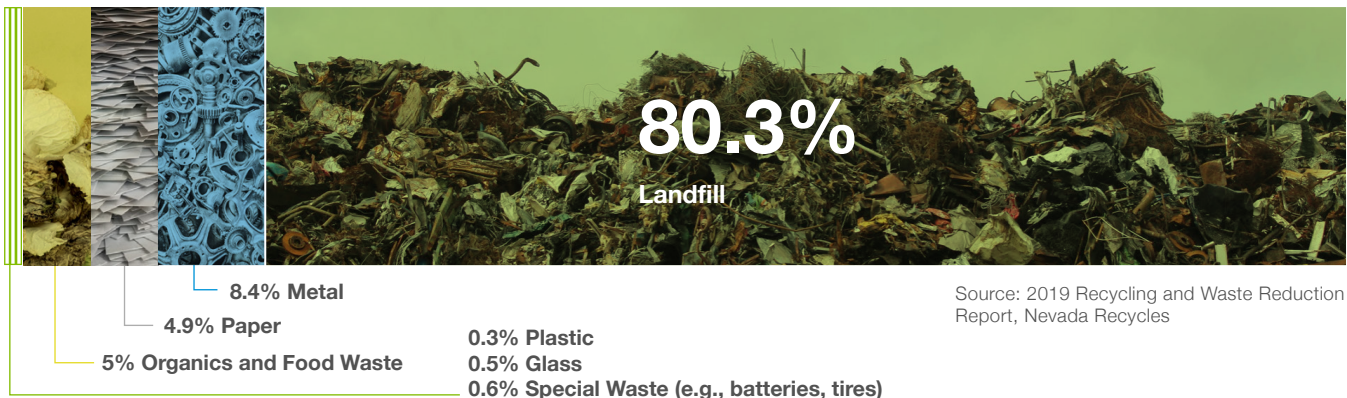
A closed-loop system that keeps products and materials in use, thereby reducing waste piling up in landfills and decreasing the need for new materials.

How is *Diverse & Circular Economy* connected to our long-term resilience and sustainability?

Our consumption and disposal of trash leads to increased local pollution and overuse of natural resources. Increasing resource efficiency and promoting circular business models offer an opportunity to reverse those trends while diversifying our economy. Supporting and growing the circular economy provides resources for tomorrow by reclaiming the waste we create today, and creates new education and employment opportunities.

Materials Recycled or Disposed Of Statewide

The vast majority of Nevada's waste goes to a landfill - including valuable materials that could be reused, recycled, or turned into energy.



Source: 2019 Recycling and Waste Reduction Report, Nevada Recycles

By the Numbers



19.7%

Recycling and compost ("diversion") rate in 2019

Up from 8% in 2009
Nevada state goal: 25%
National diversion rate: 32.1%



#1

home to the largest residential recycling facility in the country

And the #1 largest landfill in the country



2,677,304 tons

of waste sent to landfill in 2019

enough to fill Allegiant Stadium more than

33x

Steps we are already taking to build a *Diverse & Circular Economy*:

Reducing Food Waste: MGM Resorts rescues food left over from events and has donated 1.5 million meals to community members in need.

Recycling for Roads: The "Pulverize and Pave" program through the Clark County Department of Public Works constructed 3 million miles of paved roads using recycled asphalt in 2005.



Source: Republic Services



Leading by Example: Reducing Single-Use Plastics

Clark County has installed 37 water bottle filling stations at county facilities (with 11 more to come) to reduce the County's reliance on single-use plastic bottles.