



VIRTUAL FORUM SERIES

CONNECTED & EQUITABLE MOBILITY



WEDNESDAY MAR 16

<https://publicinput.com/D4281>



Forum Objectives

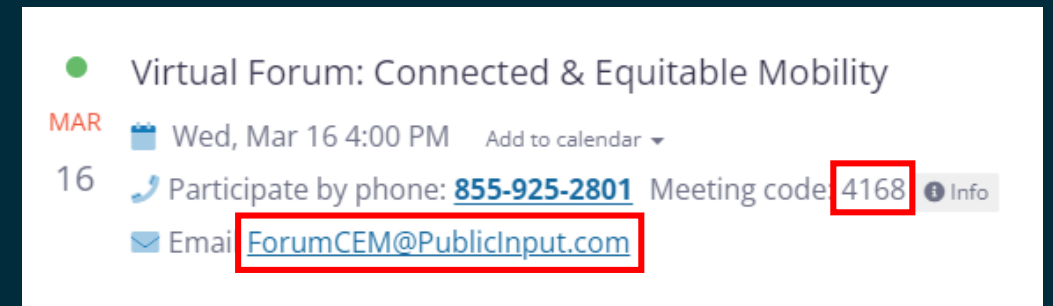
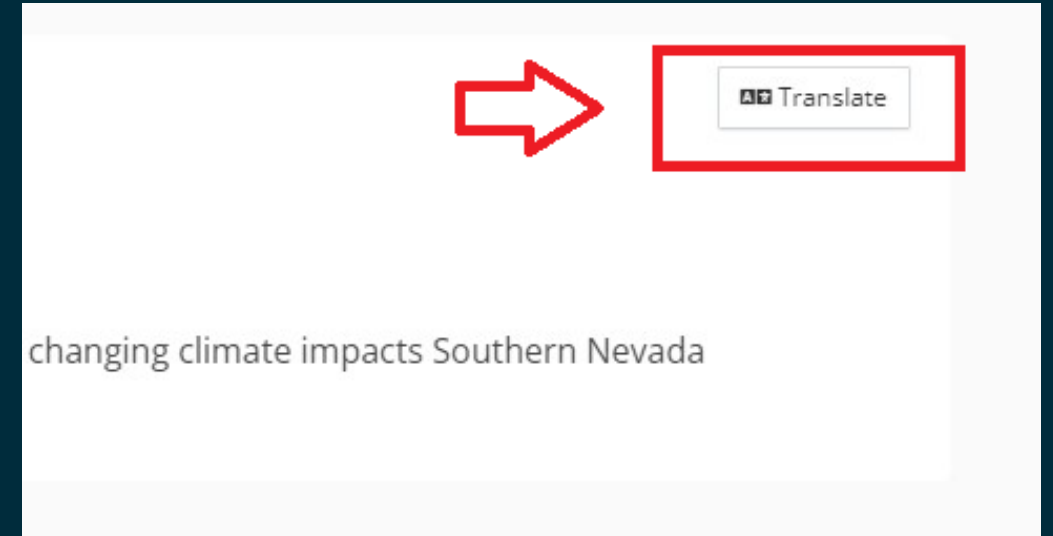
- **Review** how climate change affects transportation systems and mobility in Clark County.
- **Describe** how our choices in how we get around can contribute to sustainability and resilience.
- **Discuss** ideas and considerations to achieve solutions in this focus area.





How to Use Public Input

- **Call in** to hear audio and leave voicemail comments.
- **Type** comments into the chat.
- **Translate** the page and meeting audio.





All-In Clark County

Address climate change and create a more sustainable future.

A smart, bold, inclusive approach to ensuring the well-being and prosperity of all, today and for future generations.

Led by **Department of Environment and Sustainability**

Samantha Baker

Sustainability Program Administrator





Quick Poll



CLIMATE CHANGE AND MOBILITY





**CHANGING
CLIMATE
CONDITIONS:**



**WHICH LEAD
TO CLIMATE
HAZARDS:**



**RESULT IN THE
FOLLOWING DIRECT
AND INDIRECT IMPACTS:**



Temperature



Heat Waves



Precipitation



**Intense Storms
Flooding
Drought**

- Heat related illness
- Poor air quality
- Higher energy demands
- Pavement buckling

- Wildfires
- Smoke

- Infrastructure damage
- Blocked roadways
- Power outages
- Water shortages
- Crop/habitat damage



What Climate Impacts Mean for Mobility

- Health and safety concerns for users of *all* modes due to extreme heat
- Physical damage to roads, infrastructure, and technology
- Air quality challenges exacerbated by traffic
- Economic impacts when deliveries, tourism, or commutes are interrupted



Calico Basin July 2021



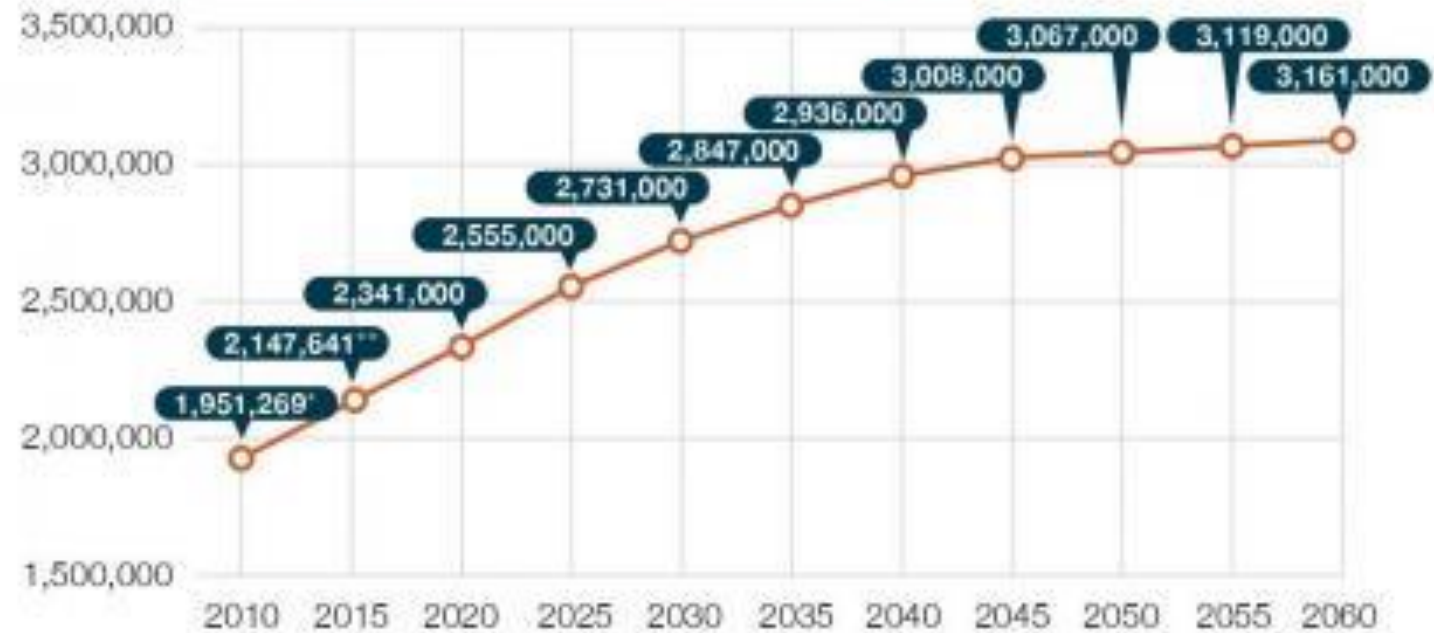
Increasing population

860,000

New residents
expected by

2060

Clark County Population Forecast (2010-2050)



*2010 U.S. Census.

**SNRPC consensus population estimate.

SOURCE: UNLV Center for Business and Economic Research (CBER), June 2010.



Current Transportation System

- **7,000** miles of roads
- **65 million** transit trips with RTC
- **1,000** miles of bike facilities – only **2%** of commutes include biking and walking
- **39 million** tons of goods moved by freight modes
- Vehicle miles traveled (VMT) per capita: **7,283**
 - Less than the national average

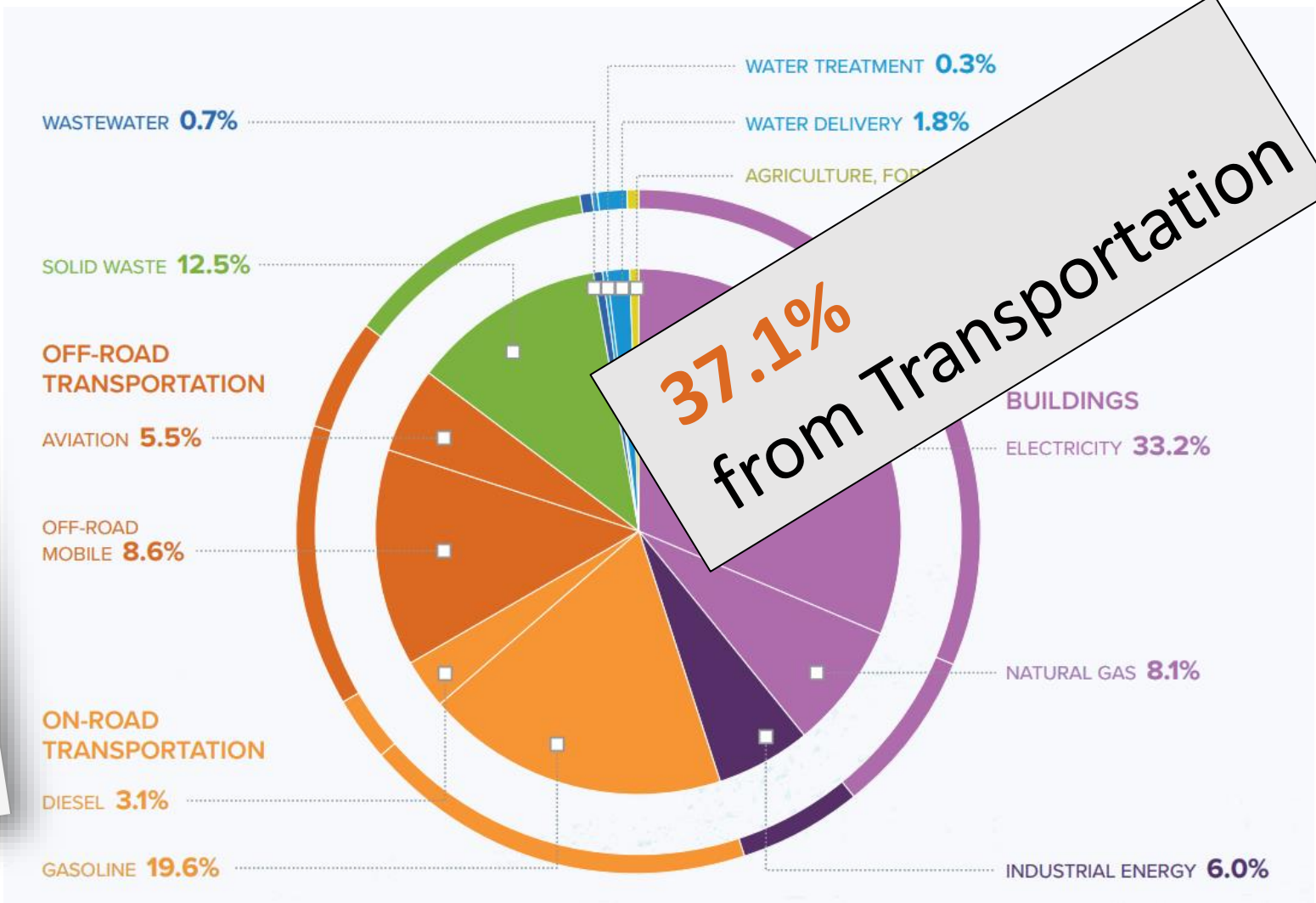


RTC Access 2050 Executive Summary

Regional GHG Inventory 2019



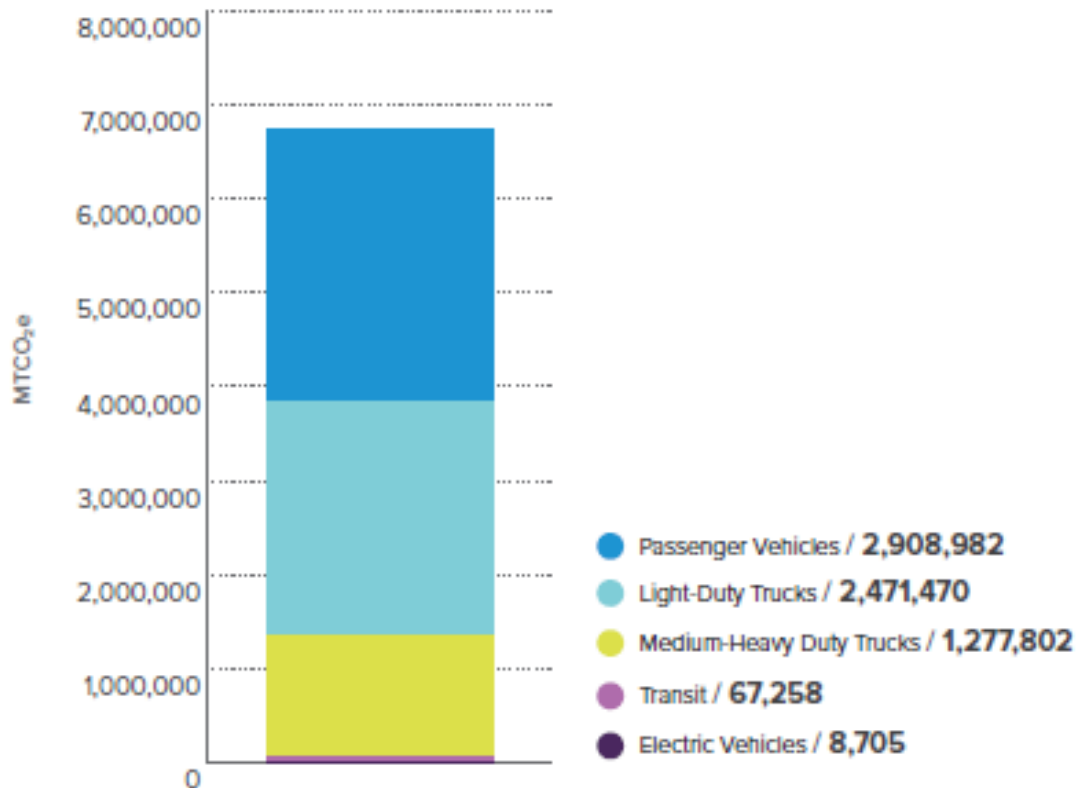
Greenhouse Gas Emissions Inventory - 2019



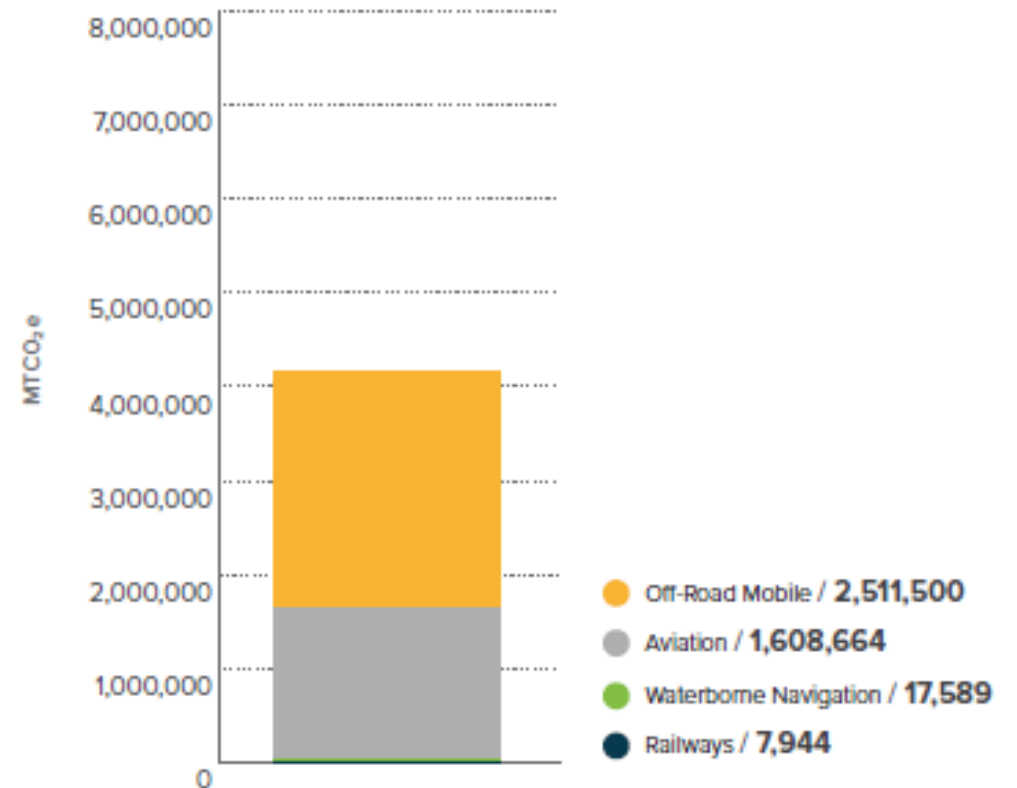


Transportation Emissions

On-Road Transportation



Off-Road Transportation





Driving Habits

“ Single Occupancy Vehicle ”



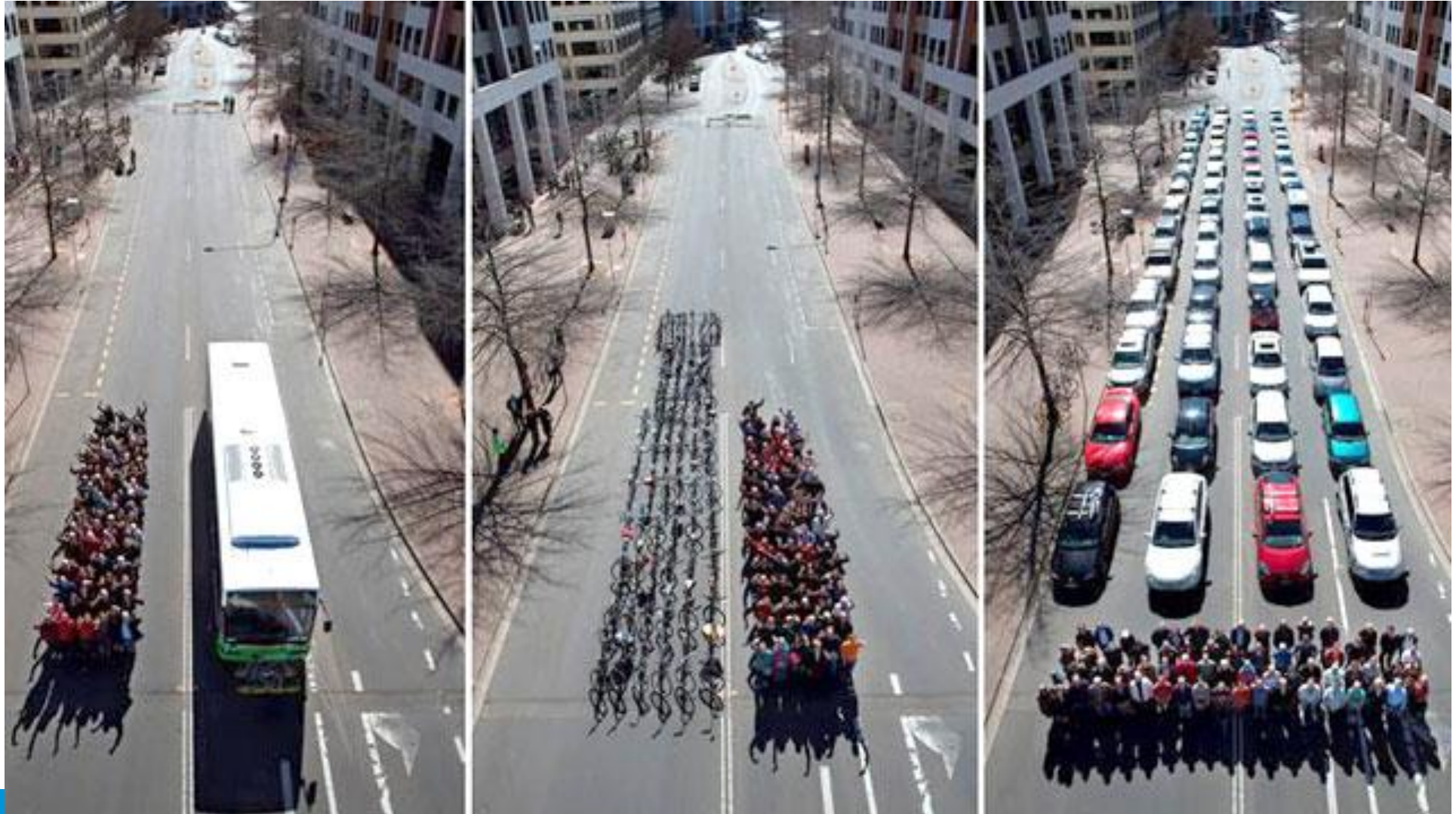
78.2%

of residents commute in personal vehicles, creating **50%** of transportation-related GHGs



Cars and Land Use

70
people





Cars and Land Use

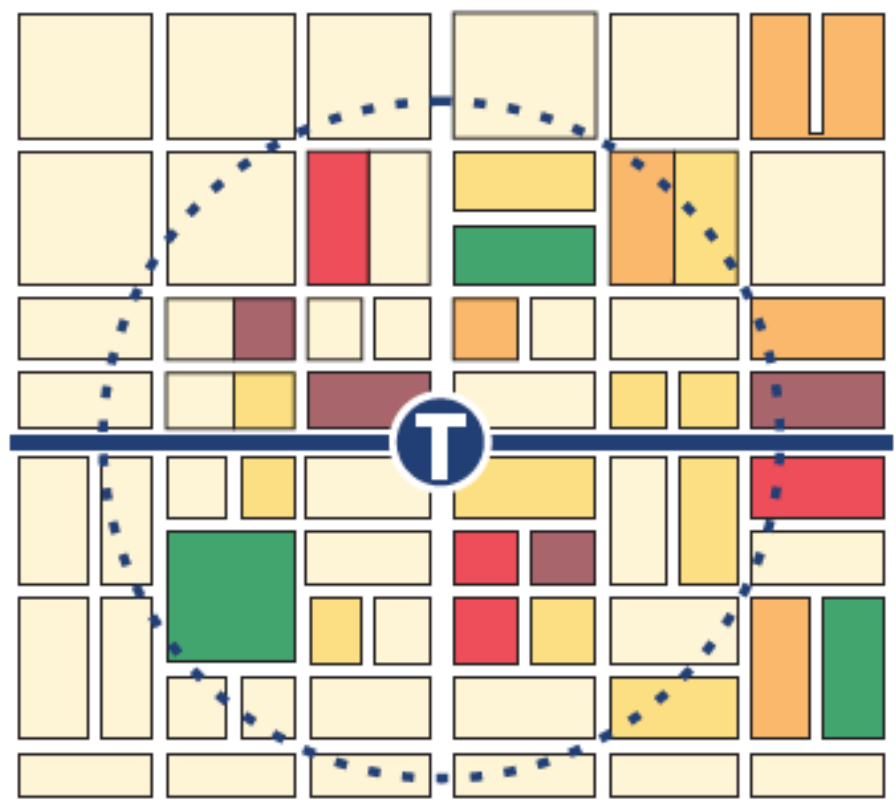
Transit-oriented development

TOD creates dense, walkable, and mixed-use spaces near transit that support vibrant, sustainable, and equitable communities.



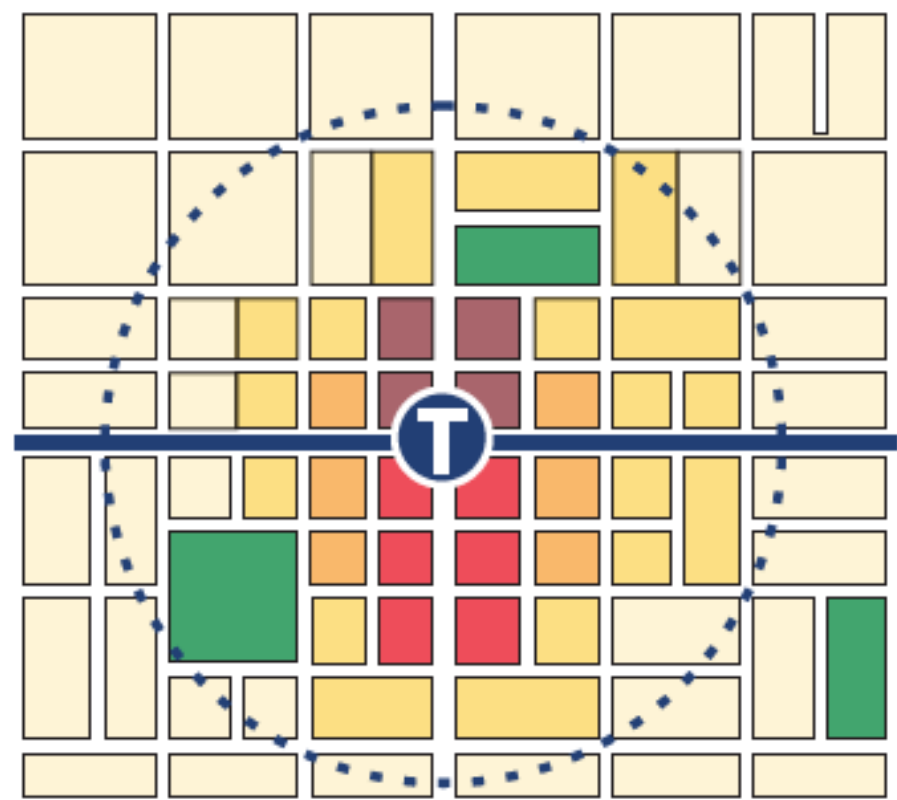
Non-Transit Oriented Development

Land uses not organized around transit



Transit Oriented Development

Land uses organized around transit



- Low Density Residential
- Medium Density Residential
- High Density Residential
- Commercial
- Mixed Use
- Park
- T Transit Stop
- Transit Route
- 10 minute walk



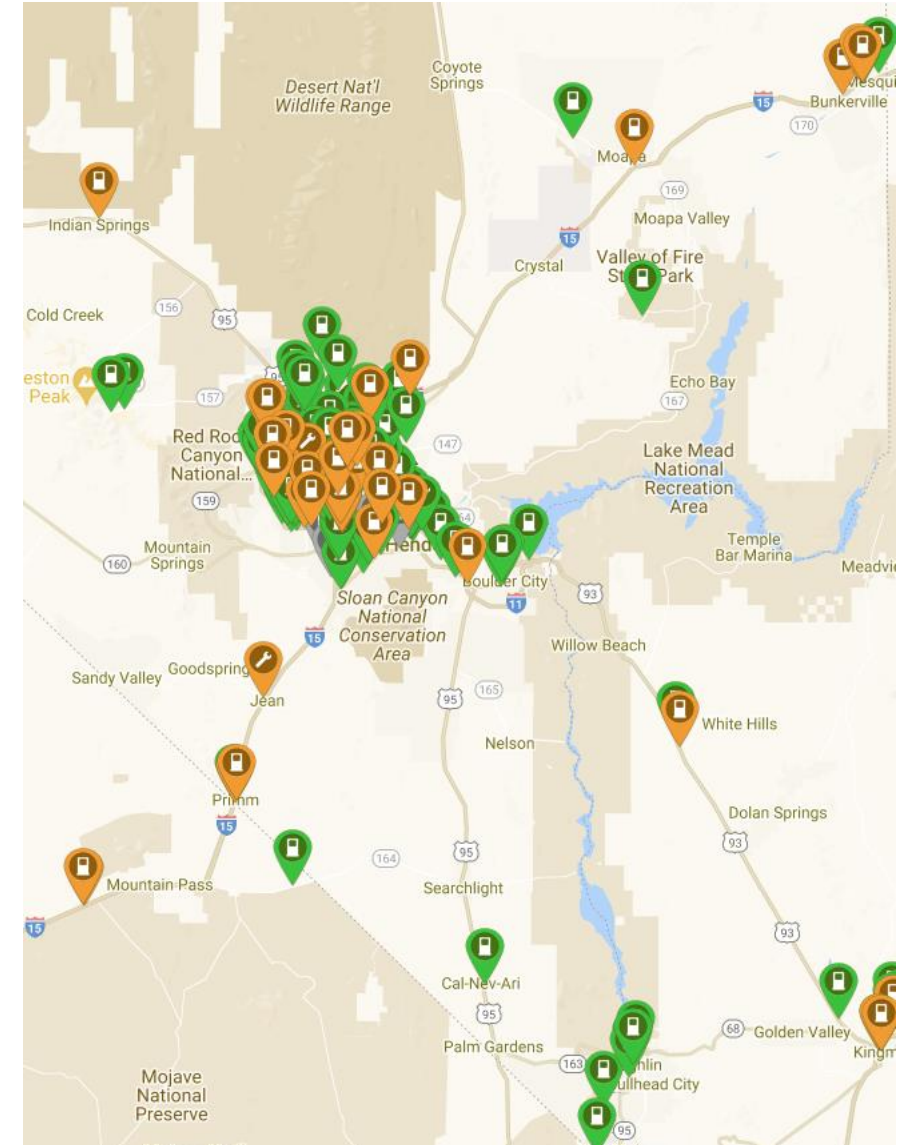
Public Transit

- RTC On Board Mobility Plan (2021)
 - [High-capacity transit](#) (like light rail, streetcar, or bus rapid transit)
 - Expand service and connect to major destinations – resort corridor employees, jobs, housing, seniors, people with disabilities
 - Make short trips easier
- *Concerns: Personal safety, convenience, travel time, connected to destinations*
- **Future-Focused** : Electrify transit, stations as resilience hubs



Electric Vehicles

- Cleaner even when powered by fossil fuel-based electricity
- Good time to buy
 - More model options
 - More battery range
 - Incentives for both cars and chargers
- Charging station availability





Electric Vehicles

- *Concerns: affordability, range anxiety, access to charging, environmental impact of batteries*
- **Future-Focused:** EV batteries for energy resilience
- Clark County [EV Resource Center](#)





Biking and Walking

- Provide low-cost mobility w/o a car
- *RTC [Regional Walkability Plan](#)* – for a street network that is safe, comfortable, and connected
- *Concerns: traffic safety, heat, transporting things and people, travel time*
- **Future-Focused:** Separated biking and walking facilities, e-bikes, universal design





Leading By Example: Clark County

Clark County has the largest alternative fuel vehicle fleet in the state. **Over half** of county vehicles are **hybrids, EVs, or biodiesel.**





Leading by Example: Regional Coordination

Regional Transportation Commission of Southern Nevada

- Public transit, traffic management, roadway design and construction, regional planning
- Steward of federal and state funds and county tax revenue
- Guided by city and county elected officials, technical experts and public input
- *RTC Access 2050*
 - Improve safety and traffic congestion
 - More mobility options and connections
- *Southern Nevada Strong*
 - Increase transportation choices for residents and visitors.





Leading By Example: More Successes

- Las Vegas ranked #1 metro area for EV growth in the nation.
- RTC's commuter services reduce traffic by ~ 3,500 cars/day.
- Clark County employees work a 4-day week. Five million fewer miles driven avoids the equivalent emissions from burning 2.3 million pounds of coal.



6,000

annual EV registrations in 2019 in Clark County, a **68%** increase in a single year



WHAT IS *ALL-IN*?





Regional Greenhouse Gas Emissions Inventory

To assess regional sources of greenhouse gas (GHG) emissions contributing to climate change.



Climate Vulnerability Assessment

To confirm climate hazards and the areas and systems most vulnerable to these hazards and identify solutions to enhance our community's overall resilience.



Community Sustainability & Climate Action Plan

To grow climate literacy in the community and work together to develop a plan of action to ensure a sustainable and resilient future for all.



Definitions

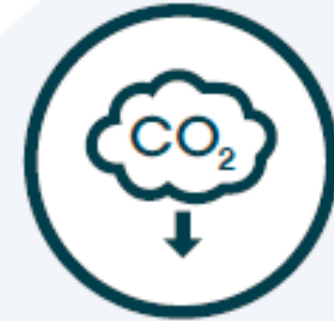
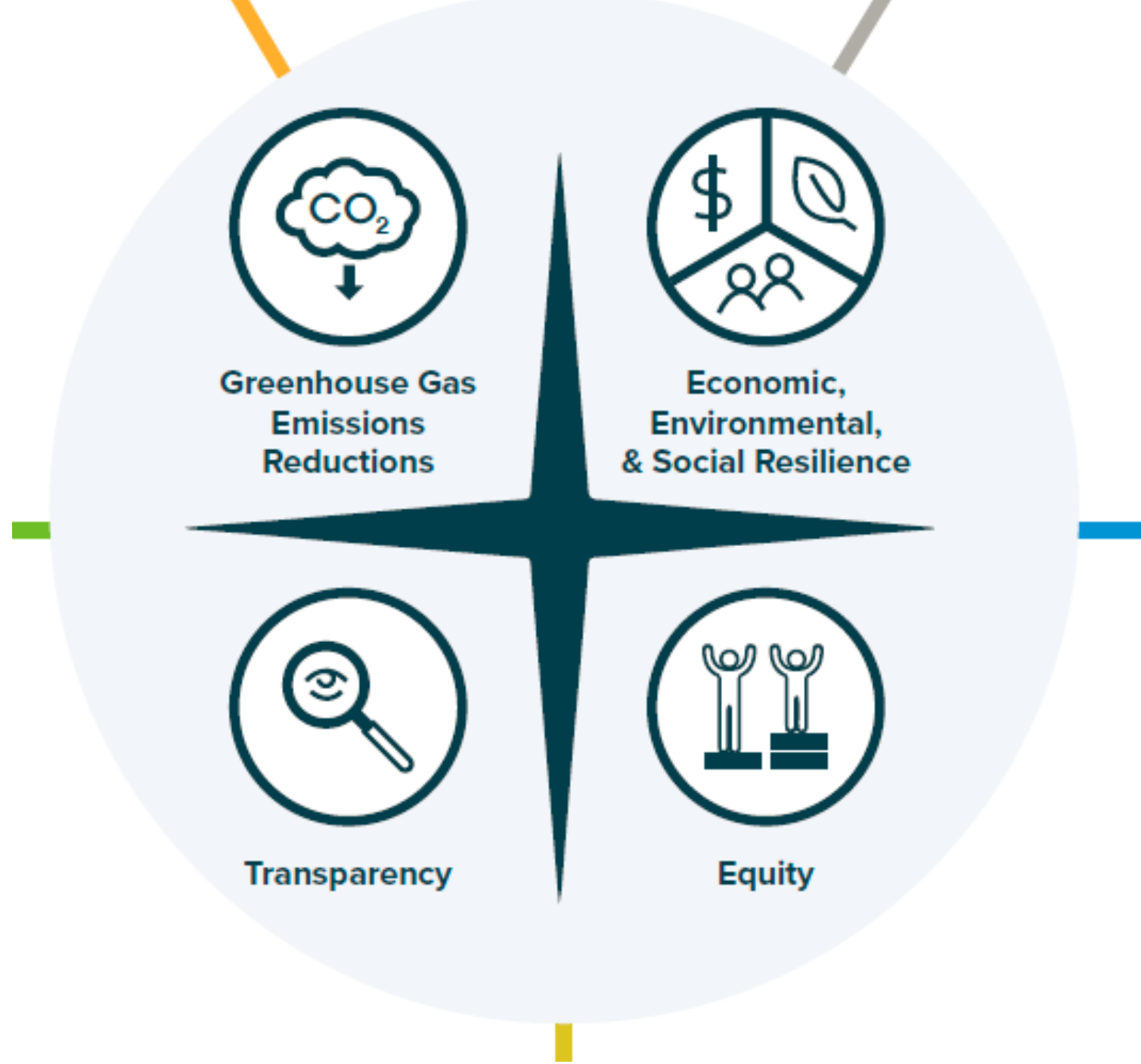
A ***sustainable*** Clark County balances resource efficiency, social well-being, and environmental stewardship while equitably meeting the needs of a growing community and thriving economy.

A ***resilient*** Clark County supports residents, businesses, and visitors to be healthy, successful, and adaptable to changing climate conditions.



Guiding Principles

Foundation for evaluating goals and actions across the *All-In Initiative*



Greenhouse Gas
Emissions
Reductions



Economic,
Environmental,
& Social Resilience



Transparency



Equity



Six Key Areas



**Clean & Reliable
Energy**



**Connected &
Equitable Mobility**



**Diverse &
Circular Economy**



**Sustainable
Water Systems**



**Resilient & Healthy
Community**



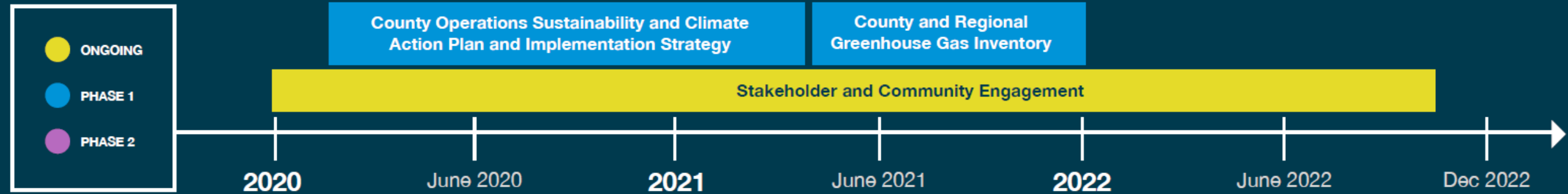
**Smart Buildings
& Development**

Learn more about each of these areas at allinclarkcounty.com



All-In Timeline

All-In Clark County Planning Process Timeline



2 WAYS CLARK COUNTY CAN ADDRESS CLIMATE CHANGE



1 Reduce greenhouse gas emissions

2 Prepare for impacts of climate change

OUR VISION

A vertical white line is positioned to the right of the text 'OUR VISION', extending from the top of the text to the bottom of the text.

Our Vision

Developing a safe, connected, and accessible transportation system that prioritizes low-carbon mobility, public transportation, and active lifestyles.



'Mobility' vs. 'Transportation'

Mobility *noun*

The ability for people to get from one place to another using one or more modes of transportation to meet their daily needs.

- About the *people* not the system.
- Mobility = ***ability***
- Equitable mobility recognizes different people need different transportation options.



What is 'Connected & Equitable Mobility'?



- **Well-connected** roads and routes for **transit, bicycling, and walking**
- **Emissions-free** transportation options, including **EVs**
- Access to healthy, **active transportation** facilities like bike paths, trails, and sidewalks
- Public transportation **investment**



Examples from Other Communities

- Accelerate the shift to electric vehicles.
- Enhance and actively promote zero-carbon mobility options.
- Build a high-capacity transit system.
- Promote alternatives to single occupancy vehicle trips.

**PARTICIPATE IN
THE PROCESS**





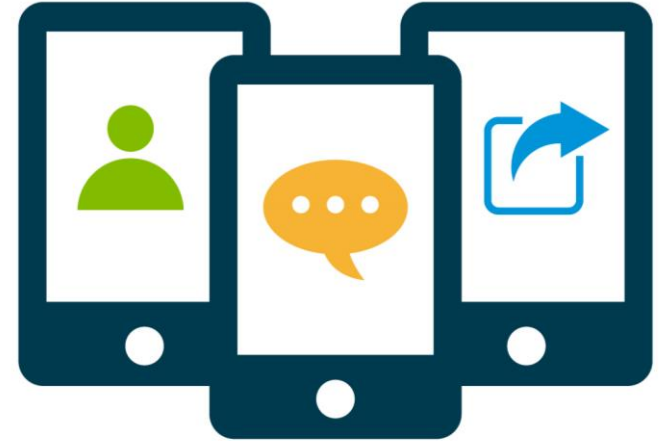
Your Thoughts





Stay Involved!

- Share your thoughts on Public Input and share with friends.
- Visit *allinclarkcounty.com*
- Follow *Sustain Clark County* on [Facebook](#), [Twitter](#), and [Instagram](#)
- Second Community Survey launching **April 4th**!





Upcoming Forums

Topic Area	Date & Time
<i>Climate Change in Southern NV</i>	<i>4pm, Tuesday February 15th</i>
<i>Resilient & Healthy Community</i>	<i>12pm, Thursday February 24th</i>
<i>Sustainable Water Systems</i>	<i>9am, Wednesday March 2nd</i>
<i>Clean & Reliable Energy</i>	<i>10am, Monday March 7th</i>
Connected & Equitable Mobility	4pm, Wednesday March 16th
Smart Buildings & Development	7pm, Thursday March 24th
Diverse & Circular Economy	12pm, Monday March 28 th



Thank You!

